

Anti-NME3 Rabbit antibody



Catalog Number: 167811

Product name

Anti-NME3 Rabbit antibody

Specificity

Human, Mouse, Rat

Antibody description

NME3 Rabbit monoclonal antibody

Preparation

Antigen: A synthetic peptide of human NME3

Formulation

50nM Tris-Glycine(pH 7.4), 0.15M NaCl,
40%Glycerol, 0.01% sodium azide and 0.05% BSA

Storage

Store at 4°C short term. Store at -20°C long term.
Avoid freeze / thaw cycle.

Clonality

Monoclonal

Ig Type

IgG

Applications

WB, IHC-P, FC, IP

Dilutions

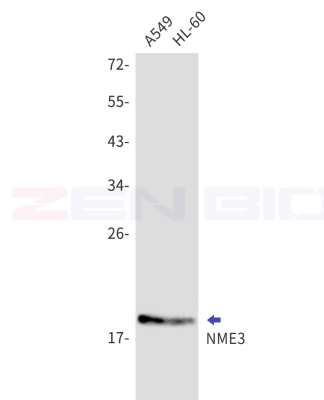
WB: 1/1000

IHC: 1/20

FC: 1/20

IP: 1/20

Validations



Western blot detection of NME3 in A549,HL-60 cell lysates using NME3 Rabbit mAb(1:1000 diluted).Predicted band size:19kDa.Observed band size:19kDa.