

Anti-phospho-MCM2 (Ser40) Rabbit antibody



Catalog Number: 167772

Product name

Anti-phospho-MCM2 (Ser40) Rabbit antibody

Specificity

Human, Mouse, Rat

Antibody description

phospho-MCM2 (Ser40) Rabbit monoclonal antibody

Preparation

Antigen: A synthetic phosphopeptide corresponding to residues surrounding Ser40 of human MCM2

Formulation

50nM Tris-Glycine(pH 7.4), 0.15M NaCl, 40%Glycerol, 0.01% sodium azide and 0.05% BSA

Storage

Store at 4°C short term. Store at -20°C long term. Avoid freeze / thaw cycle.

Clonality

Monoclonal

Ig Type

IgG

Applications

WB, IHC-P, IP

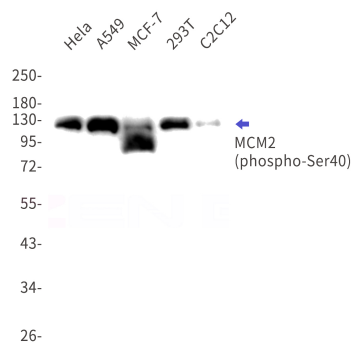
Dilutions

WB: 1/1000

IHC: 1/20

IP: 1/20

Validations



Western blot detection of phospho-MCM2(Ser40) in HeLa, A549, MCF-7, 293T, C2C12 cell lysates using phospho-MCM2(Ser40) Rabbit mAb(1:1000 diluted). Predicted band size: 102kDa. Observed band size: 125kDa.