

# Anti-phospho-delta 1 Catenin/CAS (Thr916) Rabbit antibody



Catalog Number: 167769

## Product name

Anti-phospho-delta 1 Catenin/CAS (Thr916) Rabbit antibody

## Specificity

Human

## Antibody description

phospho-delta 1 Catenin/CAS (Thr916) Rabbit monoclonal antibody

## Preparation

Antigen: A synthetic phosphopeptide corresponding to residues surrounding Thr916 of human delta 1 Catenin/CAS

## Formulation

50nM Tris-Glycine(pH 7.4), 0.15M NaCl, 40%Glycerol, 0.01% sodium azide and 0.05% BSA

## Storage

Store at 4°C short term. Store at -20°C long term. Avoid freeze / thaw cycle.

## Clonality

Monoclonal

## Ig Type

IgG

## Applications

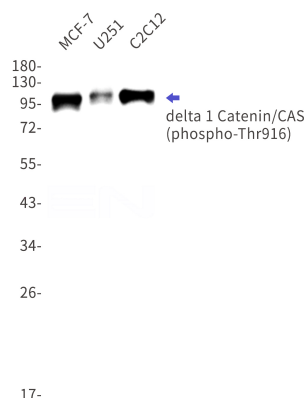
WB, IHC-P, ICC/IF

## Dilutions

WB: 1/1000-1/5000

IHC: 1/501/50

## Validations



Western blot detection of phospho-delta 1 Catenin/CAS (Thr916) in MCF-7,U251,C2C12 cell lysates using phospho-delta 1 Catenin/CAS (Thr916) Rabbit mAb(1:1000 diluted).Predicted band size:108kDa.Observed band size:100kDa.