

Anti-c-Rel Rabbit antibody



Catalog Number: 167715

Product name

Anti-c-Rel Rabbit antibody

Specificity

Human

Antibody description

c-Rel Rabbit monoclonal antibody

Preparation

Antigen: A synthetic peptide of human c-Rel

Formulation

50nM Tris-Glycine(pH 7.4), 0.15M NaCl,
40%Glycerol, 0.01% sodium azide and 0.05% BSA

Storage

Store at 4°C short term. Store at -20°C long term.
Avoid freeze / thaw cycle.

Clonality

Monoclonal

Ig Type

IgG

Applications

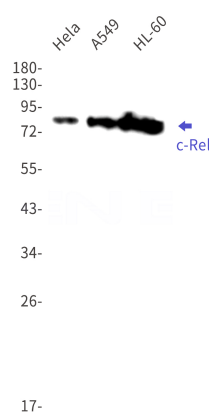
WB, IP

Dilutions

WB: 1/2000-1/10000

IP: 1/20

Validations



Western blot detection of c-Rel in HeLa,A549,HL-60 cell lysates using c-Rel Rabbit mAb(1:1000 diluted).Predicted band size:69kDa.Observed band size:78kDa.