

Anti-phospho-Smad1 (Ser463/Ser465) Rabbit antibody



Catalog Number: 167684

General Information

Product name:

Anti-phospho-Smad1 (Ser463/Ser465) Rabbit antibody

Immunogen:

Applications:

WB, IP

Specificity:

Human, Mouse

Antibody description:

phospho-Smad1 (Ser463/Ser465) Rabbit monoclonal antibody

Properties

Preparation:

Antigen: A synthetic phosphopeptide corresponding to residues surrounding Ser463/Ser465 of human Smad1

Formulation:

50nM Tris-Glycine(pH 7.4), 0.15M NaCl, 40%Glycerol, 0.01% sodium azide and 0.05% BSA

Storage:

Store at 4°C short term. Store at -20°C long term. Avoid freeze / thaw cycle.

Clonality:

Monoclonal antibody

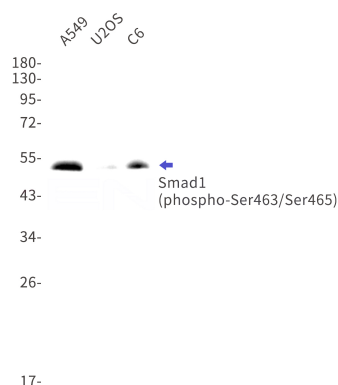
Ig Type:IgG

Applications

WB: 1/1000

IP: 1/20

Validations



Western blot detection of phospho-Smad1 (Ser463/Ser465) in A549,U2OS,C6 cell lysates using phospho-Smad1 (Ser463/Ser465) Rabbit mAb(1:1000 diluted).Predicted band size:52kDa.Observed band size:52kDa.