

Anti-p57 Kip2 Rabbit antibody



Catalog Number: 167639

Product name

Anti-p57 Kip2 Rabbit antibody

Specificity

Human

Antibody description

p57 Kip2 Rabbit monoclonal antibody

Preparation

Antigen: A synthetic peptide of human p57 Kip2

Formulation

50nM Tris-Glycine(pH 7.4), 0.15M NaCl, 40%Glycerol, 0.01% sodium azide and 0.05% BSA

Storage

Store at 4°C short term. Store at -20°C long term. Avoid freeze / thaw cycle.

Clonality

Monoclonal

Ig Type

Rabbit IgG

Applications

WB, IHC-P, IP

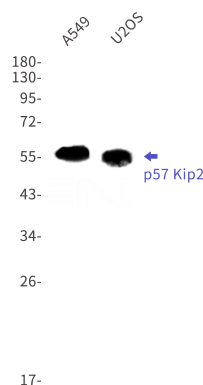
Dilutions

WB: 1/1000

IHC: 1/50

IP: 1/20

Validations



Western blot detection of p57 Kip2 in A549,U2OS cell lysates using p57 Kip2 Rabbit mAb(1:1000 diluted).Predicted band size:32kDa.Observed band size:57kDa.