

Anti-Tuberin Rabbit antibody



Catalog Number: 167579

Product name

Anti-Tuberin Rabbit antibody

Specificity

Human

Antibody description

Tuberin Rabbit monoclonal antibody

Preparation

Antigen: A synthetic peptide of human Tuberin

Formulation

50nM Tris-Glycine(pH 7.4), 0.15M NaCl, 40%Glycerol, 0.01% sodium azide and 0.05% BSA

Storage

Store at 4°C short term. Store at -20°C long term. Avoid freeze / thaw cycle.

Clonality

Monoclonal

Ig Type

IgG

Applications

WB, IHC-P, ICC/IF, FC, IP

Dilutions

WB: 1/5000

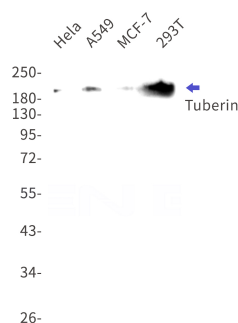
IHC: 1/20

ICC/IF: 1/20

FC: 1/200-1/1000

IP: 1/20

Validations



Western blot detection of Tuberin in HeLa, A549, MCF-7, 293T cell lysates using Tuberin Rabbit mAb(1:1000 diluted). Predicted band size: 201kDa. Observed band size: 201kDa.