

# Anti-Cyclin D1 Rabbit antibody



Catalog Number: 167563

## Product name

Anti-Cyclin D1 Rabbit antibody

## Specificity

Human, Mouse, Rat

## Antibody description

Cyclin D1 Rabbit polyclonal antibody

## Preparation

Antigen: A synthetic peptide of human Cyclin D1

## Formulation

Supplied in 50nM Tris-Glycine(pH 7.4), 0.15M NaCl, 40%Glycerol, 0.01% sodium azide and 0.05% BSA.

## Storage

Store at -20°C. Stable for 12 months from date of receipt.

## Clonality

Polyclonal

## Ig Type

Rabbit IgG

## Applications

WB, IHC-P, ICC/IF, IP

## Dilutions

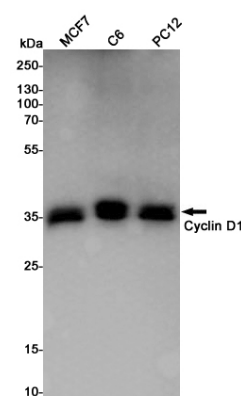
WB: 1/2000

IHC: 1/20-1/500

ICC/IF: 1/100

IP: 1/30

## Validations



Western blot detection of Cyclin D1 in MCF7,C6,PC12 cell lysates using Cyclin D1 Rabbit pAb(1:1000 diluted).Predicted band size:34KDa.Observed band size:36KDa.