

Anti-Acetyl-p53 (Lys382) Rabbit antibody



Catalog Number: 167487

Product name

Anti-Acetyl-p53 (Lys382) Rabbit antibody

Ig Type

Rabbit IgG

Specificity

Human

Applications

WB, IHC-P, ELISA

Antibody description

Acetyl-p53 (Lys382) Rabbit polyclonal antibody

Dilutions

WB: 1/500 - 1/2000

Preparation

Antigen: Synthesized acetyl-peptide derived from the human p53 around the acetylation site of K382.

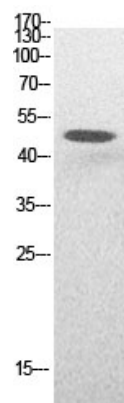
IHC-p: 1/100-300

ELISA: 1/20000

Formulation

Liquid in PBS containing 50% glycerol, 0.5% BSA and 0.02% sodium azide.

Validations



Western Blot analysis of HepG2 cells using Acetyl-p53 (K382) Polyclonal Antibody.

Storage

Store at 4°C short term. Store at -20°C long term. Avoid freeze / thaw cycle.

Clonality

Polyclonal