

Anti-MOG Rabbit antibody



Catalog Number: 167454

Product name

Anti-MOG Rabbit antibody

Specificity

Human, Mouse, Rat

Antibody description

MOG Rabbit polyclonal antibody

Preparation

Antigen: A synthetic peptide of human Myelin oligodendrocyte glycoprotein

Formulation

Supplied in 50nM Tris-Glycine(pH 7.4), 0.15M NaCl, 40%Glycerol, 0.01% sodium azide and 0.05% BSA.

Storage

Store at -20°C. Stable for 12 months from date of receipt.

Clonality

Polyclonal

Ig Type

Rabbit IgG

Applications

WB, IHC-P, ICC/IF

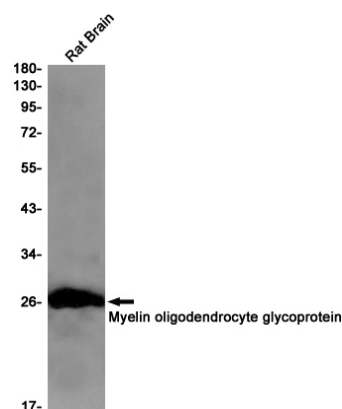
Dilutions

WB: 1/1000-1/5000

IHC: 1/100-1/500

ICC/IF: 1/100-1/500

Validations



Western blot detection of Myelin oligodendrocyte glycoprotein in Rat Brain lysates using Myelin oligodendrocyte glycoprotein Rabbit pAb(1:1000 diluted). Predicted band size:28kDa. Observed band size:28kDa.