

# Anti-KDM1/LSD1 Rabbit antibody



Catalog Number: 167434

## Product name

Anti-KDM1/LSD1 Rabbit antibody

WB: 1/1000-1/2000

IHC: 1/50-1/200

## Specificity

Human, Mouse, Rat

ICC/IF: 1/50-1/200

IP: 1/30

## Antibody description

KDM1/LSD1 Rabbit polyclonal antibody

## Validations

## Preparation

Antigen: A synthesized peptide derived from human KDM1 / LSD1

## Formulation

Rabbit IgG in phosphate buffered saline , pH 7.4, 150mM NaCl, 0.02% sodium azide and 50% glycerol.

## Storage

Store at 4°C short term. Store at -20°C long term. Avoid freeze / thaw cycle.

## Clonality

Polyclonal

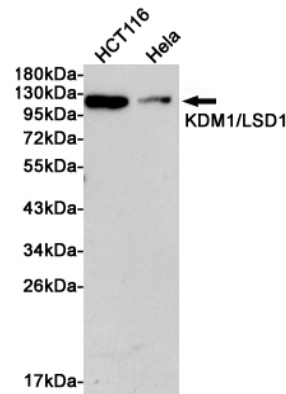
## Ig Type

Rabbit IgG

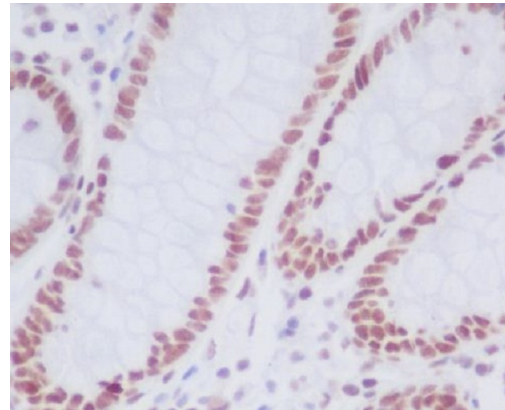
## Applications

WB, IHC-P, ICC/IF, IP

## Dilutions



Western blot analysis of extracts from HCT116 and HeLa cells using KDM1/LSD1 Rabbit pAb at 1:1000 dilution. Predicted band size: 92kDa. Observed band size: 110kDa.



Immunohistochemical analysis of paraffin-embedded human colon, using KDM1/LSD1 Antibody.