

# Anti-CD3G Rabbit antibody



Catalog Number: 167392

## Product name

Anti-CD3G Rabbit antibody

WB: 1/2000-1/10000

IHC: 1/50-1/200

## Specificity

Human, Mouse

ICC/IF: 1/50-1/200

FC: 1/20

## Antibody description

CD3G Rabbit polyclonal antibody

IP: 1/20-1/50

## Validations

## Preparation

Antigen: A synthetic peptide of human CD3G

## Formulation

Supplied in 50nM Tris-Glycine(pH 7.4), 0.15M NaCl, 40%Glycerol, 0.01% sodium azide and 0.05% BSA.

## Storage

Store at -20°C. Stable for 12 months from date of receipt.

## Clonality

Polyclonal

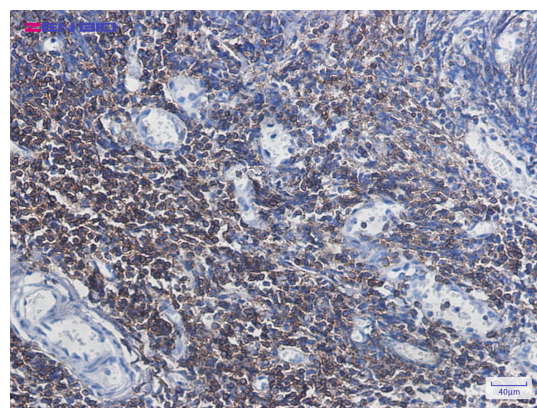
## Ig Type

Rabbit IgG

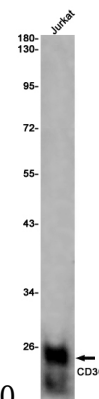
## Applications

WB, IHC-P, ICC/IF, FC, IP

## Dilutions



Immunohistochemistry of CD3G in paraffin-embedded Human tonsil using CD3G Rabbit pAb



at dilution 1/50

Western blot detection of CD3G in Jurkat cell lysates using CD3G Rabbit pAb(1:1000 diluted).Predicted band size:21KDa.Observed band size:21KDa.