

# Anti-Phospho-Nrf2 (Ser40) Rabbit antibody



Catalog Number: 167362

## Product name

Anti-Phospho-Nrf2 (Ser40) Rabbit antibody

## Specificity

Human

## Antibody description

Phospho-Nrf2 (Ser40) Rabbit polyclonal antibody

## Preparation

Antigen: A synthesized peptide derived from human Phospho-Nrf2 (S40)

## Formulation

Rabbit IgG in phosphate buffered saline , pH 7.4, 150mM NaCl, 0.02% sodium azide and 50% glycerol.

## Storage

Store at 4°C short term. Store at -20°C long term. Avoid freeze / thaw cycle.

## Clonality

Polyclonal

## Ig Type

Rabbit IgG

## Applications

WB, IHC-P, ICC/IF, IP, FC

## Dilutions

WB: 1/1000-1/2000

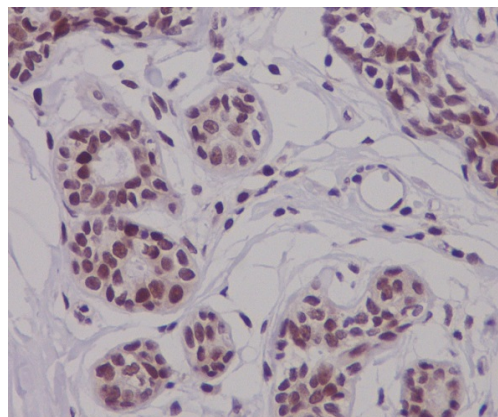
IHC: 1/50-1/200

ICC/IF: 1/50-1/200

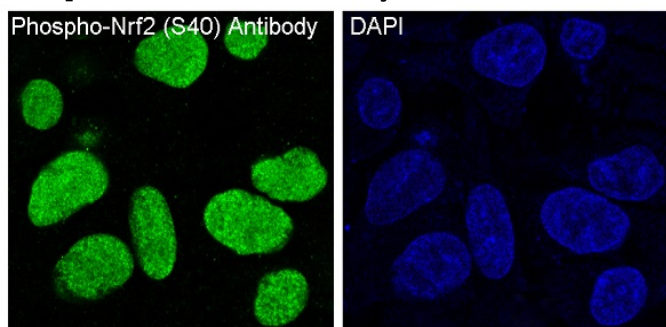
IP: 1/50

FC: 1/50

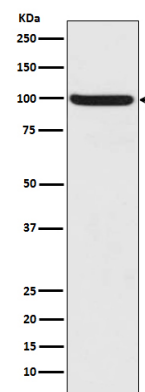
## Validations



Immunohistochemical analysis of paraffin-embedded human breast carcinoma, using Phospho-Nrf2 (S40) Antibody.



Immunofluorescent analysis of HepG2 cells, using



Phospho-Nrf2 (S40) Antibody.

Western blot analysis of Nrf2 phosphorylation expression in HepG2 cell lysate.