

# Anti-MMP9 Rabbit antibody



Catalog Number: 167361

## Product name

Anti-MMP9 Rabbit antibody

## Specificity

Human, Rat

## Antibody description

MMP9 Rabbit polyclonal antibody

## Preparation

Antigen: A synthesized peptide derived from human MMP9

## Formulation

Rabbit IgG in phosphate buffered saline , pH 7.4, 150mM NaCl, 0.02% sodium azide and 50% glycerol.

## Storage

Store at 4°C short term. Store at -20°C long term. Avoid freeze / thaw cycle.

## Clonality

Polyclonal

## Ig Type

Rabbit IgG

## Applications

WB, IHC-P, ICC/IF, FC

## Dilutions

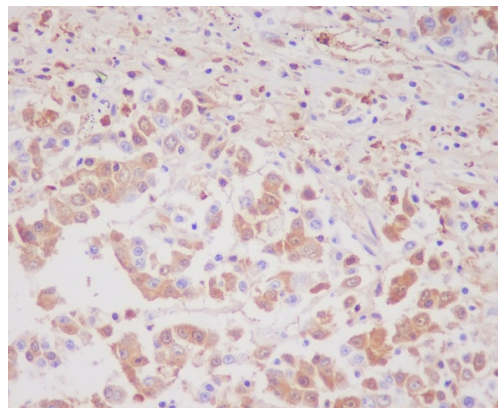
WB: 1/500-1/2000

IHC: 1/50-1/200

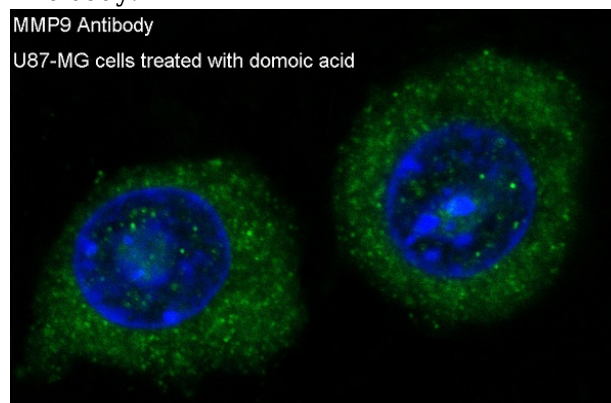
ICC/IF: 1/50-1/200

FC: 1/50

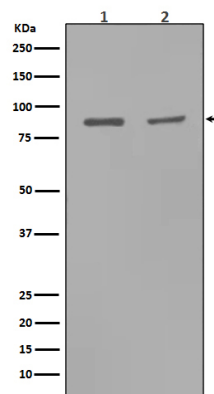
## Validations



Immunohistochemical analysis of paraffin-embedded human colon cancer, using MMP9 Antibody.



Immunofluorescent analysis of U87-MG cells,



using MMP9 Antibody.

Western blot analysis of MMP9 expression in (1)Rat kidney tissue lysate;(2)Rat lung tissue lysate.