

# Anti-Annexin A1 Rabbit antibody



Catalog Number: 167358

## Product name

Anti-Annexin A1 Rabbit antibody

WB: 1/1000

IHC: 1/500

## Specificity

Human, Mouse, Rat

ICC/IF: 1/200

FC: 1/50

IP: 1/20

## Antibody description

Annexin A1 Rabbit polyclonal antibody

## Preparation

Antigen: Recombinant protein of human Annexin A1

## Formulation

Supplied in 50nM Tris-Glycine(pH 7.4), 0.15M NaCl, 40%Glycerol, 0.01% sodium azide and 0.05% BSA.

## Storage

Store at -20°C. Stable for 12 months from date of receipt.

## Clonality

Polyclonal

## Ig Type

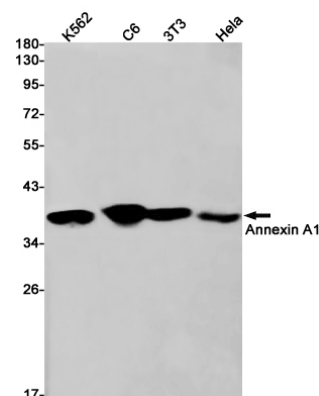
Rabbit IgG

## Applications

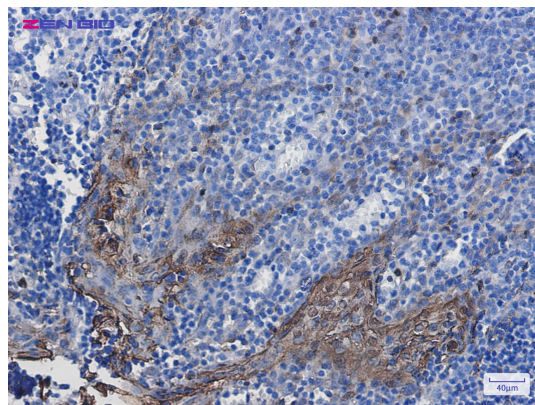
WB, IHC-P, ICC/IF, FC, IP

## Dilutions

## Validations



Western blot detection of Annexin A1 in K562,C6,3T3,HeLa cell lysates using Annexin A1 Rabbit pAb(1:1000 diluted).Predicted band size:39kDa.Observed band size:39kDa.



Immunohistochemistry of Annexin A1 in paraffin-embedded Human tonsil using Annexin A1 Rabbit pAb at dilution 1/50