

# Anti-HMGB1 Rabbit antibody



Catalog Number: 167355

## Product name

Anti-HMGB1 Rabbit antibody

## Specificity

Human, Mouse, Rat

## Antibody description

HMGB1 Rabbit polyclonal antibody

## Preparation

Antigen: A synthesized peptide derived from human HMGB1

## Formulation

Rabbit IgG in phosphate buffered saline , pH 7.4, 150mM NaCl, 0.02% sodium azide and 50% glycerol.

## Storage

Store at 4°C short term. Store at -20°C long term. Avoid freeze / thaw cycle.

## Clonality

Polyclonal

## Ig Type

Rabbit IgG

## Applications

WB, IHC-P, ICC/IF, FC

## Dilutions

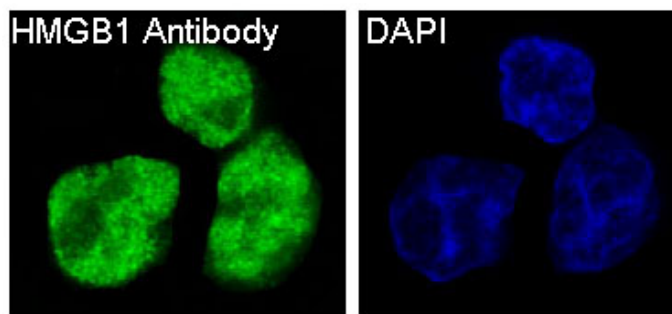
WB: 1/1000-1/2000

IHC: 1/50-1/100

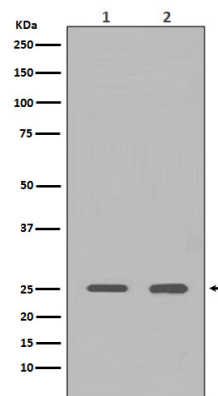
ICC/IF: 1/50-1/100

FC: 1/30

## Validations

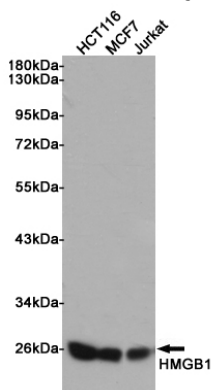


Immunofluorescent analysis of SW480 cells, using



HMGB1 Antibody.

Western blot analysis of HMGB1 expression in (1)HeLa cell lysate; (2)Rat brain lysate.



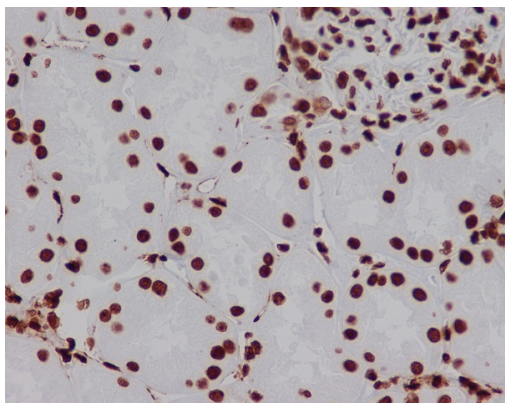
Western blot analysis of extracts from HCT116, MCF7 and Jurkat cells using HMGB1 Rabbit pAb at 1:1000 dilution. Predicted band size: 25kDa. Observed band size: 25kDa.

# Anti-HMGB1 Rabbit antibody



Catalog Number: 167355

---



Immunohistochemical analysis of paraffin-embedded human kidney, using HMGB1 Antibody.