

Anti-Estrogen Receptor alpha Rabbit antibody



Catalog Number: 167322

Product name

Anti-Estrogen Receptor alpha Rabbit antibody

Applications

WB, IHC-P, ICC/IF, FC, IP, ChIP

Specificity

Human

Dilutions

WB: 1/1000

Antibody description

Estrogen Receptor alpha Rabbit polyclonal antibody

IHC: 1/20

ICC/IF: 1/20

Preparation

Antigen: A synthetic peptide of human Estrogen Receptor alpha

FC: 1/20

IP: 1/20

ChIP: 1/20

Formulation

Supplied in 50nM Tris-Glycine(pH 7.4), 0.15M NaCl, 40%Glycerol, 0.01% sodium azide and 0.05% BSA.

Validations

Storage

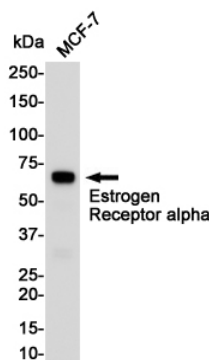
Store at -20°C. Stable for 12 months from date of receipt.

Clonality

Polyclonal

Ig Type

Rabbit IgG



Western blot detection of Estrogen Receptor α in MCF-7 cell lysates using Estrogen Receptor α Rabbit pAb(1:1000 diluted). Predicted band size:66KDa.Observed band size:66KDa.