

Anti-Smad3 Rabbit antibody



Catalog Number: 167314

Product name

Anti-Smad3 Rabbit antibody

ICC/IF: 1/50-1/200

FC: 1/50

Specificity

Human, Mouse, Rat

Validations

Antibody description

Smad3 Rabbit polyclonal antibody

Preparation

Antigen: A synthesized peptide derived from human Smad3

Formulation

Rabbit IgG in phosphate buffered saline , pH 7.4, 150mM NaCl, 0.02% sodium azide and 50% glycerol.

Storage

Store at 4°C short term. Store at -20°C long term. Avoid freeze / thaw cycle.

Clonality

Polyclonal

Ig Type

Rabbit IgG

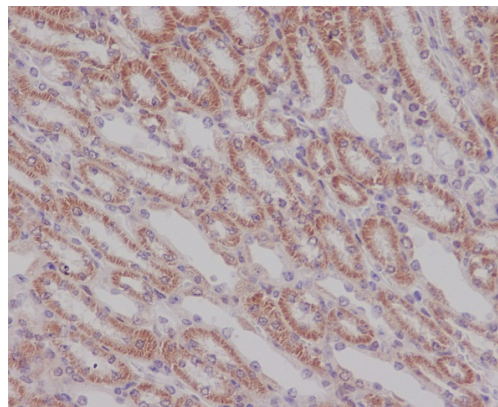
Applications

WB, IHC-P, ICC/IF, FC

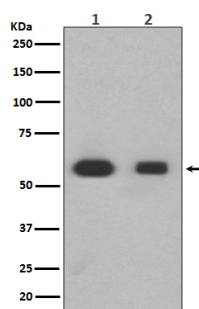
Dilutions

WB: 1/500-1/2000

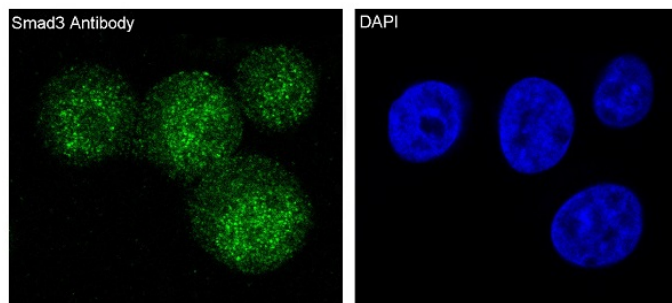
IHC: 1/50-1/200



Immunohistochemical analysis of paraffin-embedded mouse kidney, using Smad3 Antibody.



Western blot analysis of Smad3 expression in (1) Jurkat cell lysate; (2) Rat liver lysate.



Immunofluorescent analysis of HeLa cells, using Smad3 Antibody.