

# Anti-Aspartate Aminotransferase Rabbit antibody



Catalog Number: 167283

## Product name

WB: 1/1000

Anti-Aspartate Aminotransferase Rabbit antibody

IHC: 1/20-1/100

## Specificity

ICC/IF: 1/100

Human, Mouse, Rat

FC: 1/20-1/100

## Validations

## Antibody description

Aspartate Aminotransferase Rabbit polyclonal antibody

## Preparation

Antigen: A synthetic peptide of human Aspartate Aminotransferase

## Formulation

Supplied in 50nM Tris-Glycine(pH 7.4), 0.15M NaCl, 40%Glycerol, 0.01% sodium azide and 0.05% BSA.

## Storage

Store at -20°C. Stable for 12 months from date of receipt.

## Clonality

Polyclonal

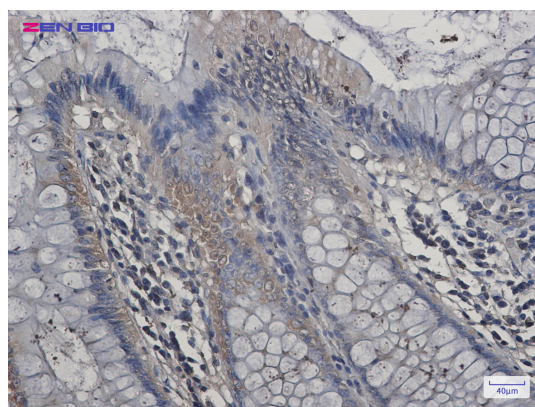
## Ig Type

Rabbit IgG

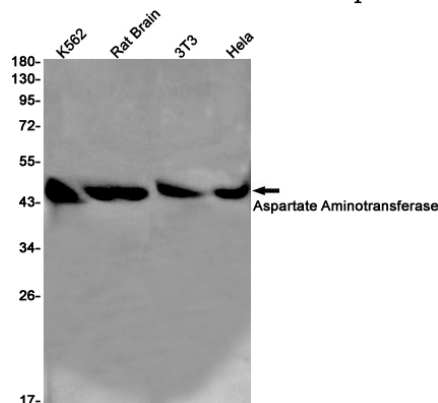
## Applications

WB, IHC-P, ICC/IF, FC

## Dilutions



Immunohistochemistry of Aspartate Aminotransferase in paraffin-embedded Human colon cancer tissue using Aspartate Aminotransferase Rabbit pAb at dilution 1/20



Western blot detection of Aspartate Aminotransferase in K562,Rat Brain,3T3,HeLa cell lysates using Aspartate Aminotransferase Rabbit pAb(1:1000 diluted).Predicted band size:46kDa.Observed band size:46kDa.