

Anti-Cyclin B1 Rabbit antibody



Catalog Number: 167282

Product name

Rabbit IgG

Anti-Cyclin B1 Rabbit antibody

Applications

Specificity

WB, IHC-P, ICC/IF, FC

Human, Mouse

Dilutions

Antibody description

WB: 1/500-1/2000

Cyclin B1 Rabbit polyclonal antibody

IHC: 1/50-1/200

Preparation

ICC/IF: 1/50-1/200

Antigen: A synthesized peptide derived from human Cyclin B1

FC: 1/100

Validations

Formulation

Rabbit IgG in phosphate buffered saline , pH 7.4, 150mM NaCl, 0.02% sodium azide and 50% glycerol.

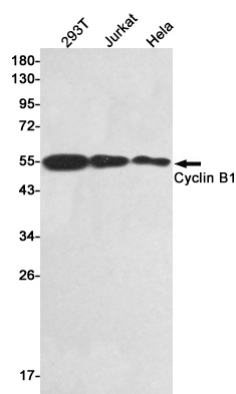
Storage

Store at 4°C short term. Store at -20°C long term. Avoid freeze / thaw cycle.

Clonality

Polyclonal

Ig Type



Western blot detection of Cyclin B1 in 293T, Jurkat, HeLa cell lysates using Cyclin B1 Rabbit pAb (1:1000 diluted). Predicted band size: 55kDa. Observed band size: 55kDa.