

# Anti-SA2 Rabbit antibody



Catalog Number: 167229

## Product name

Anti-SA2 Rabbit antibody

## Specificity

Human, Mouse, Rat

## Antibody description

SA2 Rabbit polyclonal antibody

## Preparation

Antigen: Recombinant protein of human SA2

## Formulation

Supplied in 50nM Tris-Glycine(pH 7.4), 0.15M NaCl, 40%Glycerol, 0.01% sodium azide and 0.05% BSA.

## Storage

Store at -20°C. Stable for 12 months from date of receipt.

## Clonality

Polyclonal

## Ig Type

Rabbit IgG

## Applications

WB, IHC-P, ICC/IF, FC

## Dilutions

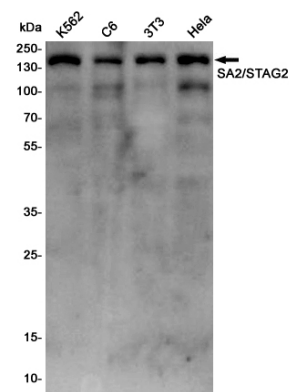
WB: 1/1000

IHC: 1/200

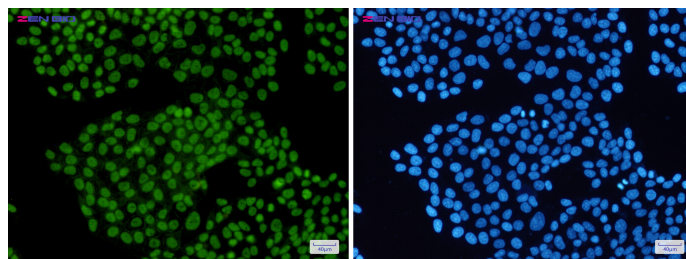
ICC/IF: 1/50

FC: 1/200

## Validations



Western blot detection of SA2/STAG2 in K562,C6,3T3,HeLa cell lysates using SA2/STAG2 Rabbit pAb(1:1000 diluted).Predicted band size:141KDa.Observed band size:141KDa.



Immunocytochemistry of SA2(green) in HeLa cells using SA2 Rabbit pAb at dilution 1/50, and DAPI(blue)