

# Anti-Superoxide Dismutase 1 Rabbit antibody



Catalog Number: 167210

## Product name

Anti-Superoxide Dismutase 1 Rabbit antibody

WB: 1/5000

IHC: 1/20

## Specificity

Human, Rat

ICC/IF: 1/20

FC: 1/20

## Antibody description

Superoxide Dismutase 1 Rabbit polyclonal antibody

## Preparation

Antigen: A synthetic peptide of human Superoxide Dismutase 1

## Formulation

Supplied in 50nM Tris-Glycine(pH 7.4), 0.15M NaCl, 40%Glycerol, 0.01% sodium azide and 0.05% BSA.

## Storage

Store at -20°C. Stable for 12 months from date of receipt.

## Clonality

Polyclonal

## Ig Type

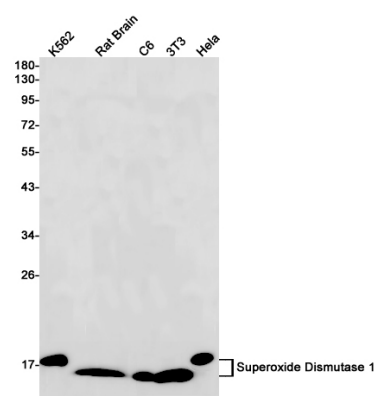
Rabbit IgG

## Applications

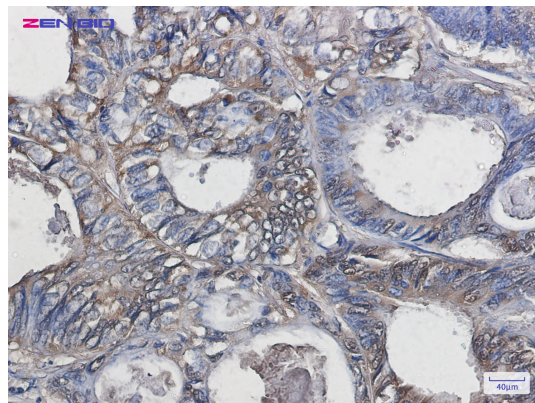
WB, IHC-P, ICC/IF, FC

## Dilutions

## Validations



Western blot detection of Superoxide Dismutase 1 in K562, Rat Brain, C6, 3T3, Hela cell lysates using Superoxide Dismutase 1 Rabbit pAb(1:1000 diluted). Predicted band size: 16kDa. Observed band size: 18kDa.



Immunohistochemistry of Superoxide Dismutase 1 in paraffin-embedded Human colon cancer tissue using Superoxide Dismutase 1 Rabbit pAb at dilution 1/20