

Anti-Lumican Rabbit antibody



Catalog Number: 167202

Product name

Anti-Lumican Rabbit antibody

Specificity

Human, Mouse, Rat

Antibody description

Lumican Rabbit polyclonal antibody

Preparation

Antigen: A synthetic peptide of human Lumican

Formulation

Supplied in 50nM Tris-Glycine(pH 7.4), 0.15M NaCl, 40%Glycerol, 0.01% sodium azide and 0.05% BSA.

Storage

Store at -20°C. Stable for 12 months from date of receipt.

Clonality

Polyclonal

Ig Type

Rabbit IgG

Applications

WB, IHC-P, ICC/IF, FC

Dilutions

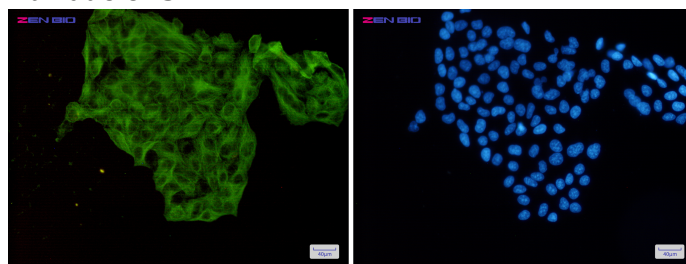
WB: 1/1000

IHC: 1/20

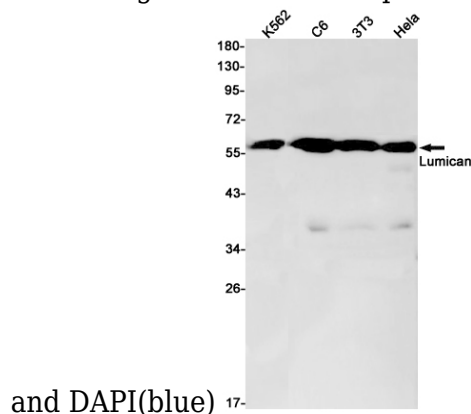
ICC/IF: 1/50

FC: 1/20-1/100

Validations



Immunocytochemistry of Lumican(green) in HeLa cells using Lumican Rabbit pAb at dilution 1/50,



and DAPI(blue) 17-

Western blot detection of Lumican in K562,C6,3T3,HeLa cell lysates using Lumican Rabbit pAb(1:1000 diluted).Predicted band size:38kDa.Observed band size:60kDa.