

Anti-MEK1 Rabbit antibody



Catalog Number: 167169

Product name

Rabbit IgG

Anti-MEK1 Rabbit antibody

Applications

Specificity

WB, IHC-P, ICC/IF, IP, FC

Human, Mouse, Rat, Cow, Dog

Dilutions

Antibody description

WB: 1/500-1/2000

MEK1 Rabbit polyclonal antibody

IHC: 1/50-1/200

Preparation

ICC/IF: 1/50-1/200

Antigen: A synthesized peptide derived from human MEK1

IP: 1/30

FC: 1/30

Formulation

Rabbit IgG in phosphate buffered saline , pH 7.4, 150mM NaCl, 0.02% sodium azide and 50% glycerol.

Validations

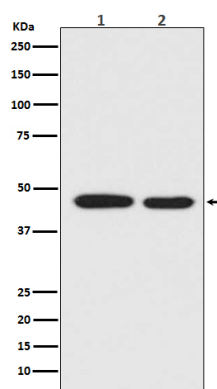
Storage

Store at 4°C short term. Store at -20°C long term. Avoid freeze / thaw cycle.

Clonality

Polyclonal

Ig Type



Western blot analysis of MEK1 expression in (1) A431 cell lysate;(2) HeLa cell lysate.