

Anti-Phospho-CD18 (Ser745) Rabbit antibody



Catalog Number: 167167

Product name

Anti-Phospho-CD18 (Ser745) Rabbit antibody

Specificity

Human, Mouse, Rat

Antibody description

Phospho-CD18 (Ser745) Rabbit polyclonal antibody

Preparation

Antigen: A synthetic phosphopeptide corresponding to residues surrounding Ser745 of human CD18

Formulation

Supplied in 50nM Tris-Glycine(pH 7.4), 0.15M NaCl, 40%Glycerol, 0.01% sodium azide and 0.05% BSA.

Storage

Store at -20°C. Stable for 12 months from date of receipt.

Clonality

Polyclonal

Ig Type

Rabbit IgG

Applications

WB, ICC/IF, FC, IP

Dilutions

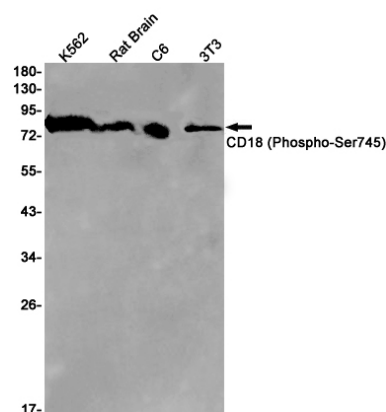
WB: 1/1000

ICC/IF: 1/100

FC: 1/200

IP: 1/20

Validations



Western blot detection of CD18 (Phospho-Ser745) in K562, Rat Brain, C6, 3T3 cell lysates using CD18 (Phospho-Ser745) Rabbit pAb(1:1000 diluted). Predicted band size: 85kDa. Observed band size: 85kDa.