

Anti-CaMKII alpha Rabbit antibody



Catalog Number: 167166

Product name

Anti-CaMKII alpha Rabbit antibody

Specificity

Human, Mouse, Rat

Antibody description

CaMKII alpha Rabbit polyclonal antibody

Preparation

Antigen: A synthetic peptide of human CaMKII

Formulation

Supplied in 50nM Tris-Glycine(pH 7.4), 0.15M NaCl, 40%Glycerol, 0.01% sodium azide and 0.05% BSA.

Storage

Store at -20°C. Stable for 12 months from date of receipt.

Clonality

Polyclonal

Ig Type

Rabbit IgG

Applications

WB, ICC/IF, FC

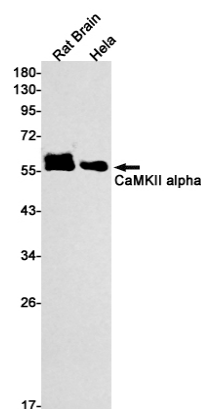
Dilutions

WB: 1/1000-1/2000

ICC/IF: 1/20-1/100

FC: 1/20-1/100

Validations



Western blot detection of CaMKII alpha in Rat Brain, HeLa cell lysates using CaMKII alpha Rabbit pAb(1:1000 diluted). Predicted band size: 54kDa. Observed band size: 54kDa.