

Anti-IFITM2 Rabbit antibody



Catalog Number: 167157

Product name

Anti-IFITM2 Rabbit antibody

Specificity

Human

Antibody description

IFITM2 Rabbit polyclonal antibody

Preparation

Antigen: A synthetic peptide corresponding to a sequence within amino acids 1-100 of human IFITM2

(NP_006426.2).MNHIVQTFSPVNSGQPPNYEMLK
EEQEVAMLGVPHNPAPPMSTVIHIRSETSVPDHVV
WSLFNTLFMNTCCLGFIAFAYSVKSRDRKMVGDV
TGAQAYAS

Formulation

PBS with 0.02% sodium azide, 50% glycerol, pH 7.3.

Storage

Store at -20°C . Avoid freeze / thaw cycles.

Clonality

Polyclonal

Ig Type

Rabbit IgG

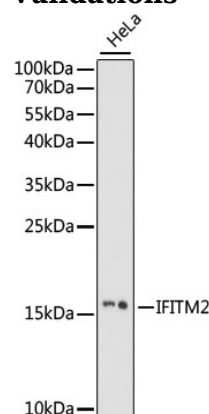
Applications

WB

Dilutions

WB: 1/500 - 1/2000

Validations



Western blot - IFITM2 Polyclonal Antibody.
Western blot analysis of extracts of HeLa cells, using IFITM2 antibody at 1:1000 dilution. Secondary antibody: HRP Goat Anti-Rabbit IgG at 1:10000 dilution. Lysates/proteins: 25ug per lane. Blocking buffer: 3% nonfat dry milk in TBST. Exposure time: 60s.