

Anti-RhoA/B/C Rabbit antibody



Catalog Number: 167153

Product name

Anti-RhoA/B/C Rabbit antibody

Specificity

Human, Mouse, Rat

Antibody description

RhoA/B/C Rabbit polyclonal antibody

Preparation

Antigen: A synthesized peptide derived from human Rho A + B + C

Formulation

Rabbit IgG in phosphate buffered saline , pH 7.4, 150mM NaCl, 0.02% sodium azide and 50% glycerol.

Storage

Store at 4°C short term. Store at -20°C long term. Avoid freeze / thaw cycle.

Clonality

Polyclonal

Ig Type

Rabbit IgG

Applications

WB, IHC-P, ICC/IF, FC

Dilutions

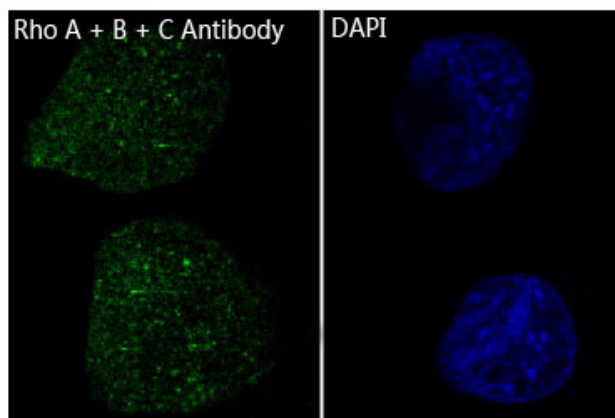
WB: 1/500-1/2000

IHC: 1/500-1/1000

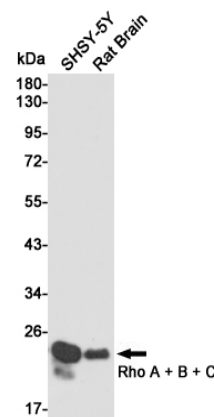
ICC/IF: 1/100-1/500

FC: 1/200

Validations

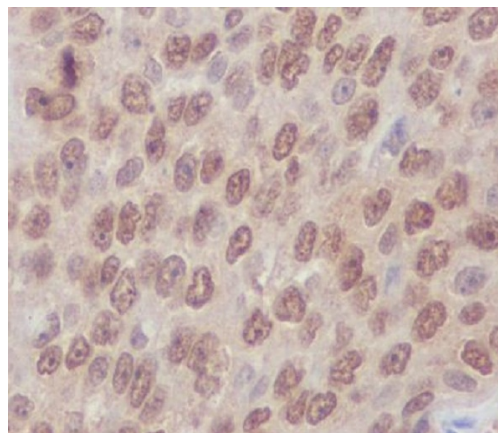


Immunofluorescent analysis of HeLa cells, using



Rho A + B + C Antibody .

Western blot analysis of Rho A + B + C expression in SHSY-5Y and Rat Brain cell lysates using Rho A + B + C antibody at 1/1000 dilution. Predicted band size: 22KDa. Observed band size: 22KDa.

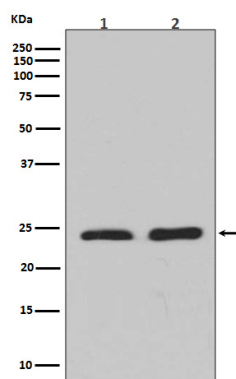


Immunohistochemical analysis of paraffin-embedded human lung carcinoma, using Rho A +

Anti-RhoA/B/C Rabbit antibody



Catalog Number: 167153



Western blot analysis of Rho A + B + C expression in (1) Jurkat cell lysate; (2) NIH/3T3 cell lysate.

B + C Antibody .