

# Anti-Calnexin Rabbit antibody



Catalog Number: 167148

## Product name

Anti-Calnexin Rabbit antibody

## Specificity

Human, Mouse, Rat

## Antibody description

Calnexin Rabbit polyclonal antibody

## Preparation

Antigen: The antiserum was produced against synthesized peptide derived from human Calnexin. AA range:543-592

## Formulation

Liquid in PBS containing 50% glycerol, 0.5% BSA and 0.02% sodium azide.

## Storage

Store at 4°C short term. Store at -20°C long term. Avoid freeze / thaw cycle.

## Clonality

Polyclonal

## Ig Type

IgG

## Applications

WB, IHC-P, ICC/IF, ELISA

## Dilutions

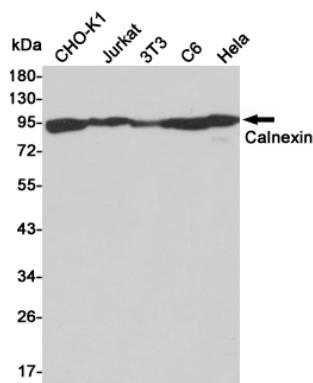
WB: 1/500 - 1/2000

IHC: 1/100 - 1/300

IF: 1/200 - 1/1000

ELISA: 1/5000

## Validations



Western blot detection of Calnexin in CHO-K1, Jurkat, 3T3, C6 and HeLa cell lysates using Calnexin rabbit pAb (1:50000 diluted). Predicted band size:90kDa. Observed band size:90kDa.