

Anti-c-Met Rabbit antibody



Catalog Number: 167138

Product name

Anti-c-Met Rabbit antibody

Specificity

Human, Mouse, Rat

Antibody description

c-Met Rabbit polyclonal antibody

Preparation

Antigen: Peptide sequence around aa.1232~1236 (K-E-Y-Y-S) derived from Human Met.

Formulation

Supplied at 1.0mg/mL in phosphate buffered saline (without Mg²⁺ and Ca²⁺), pH 7.4, 150mM NaCl, 0.02% sodium azide and 50% glycerol.

Storage

Store at 4°C short term. Store at -20°C long term. Avoid freeze / thaw cycle.

Clonality

Polyclonal

Ig Type

Rabbit IgG

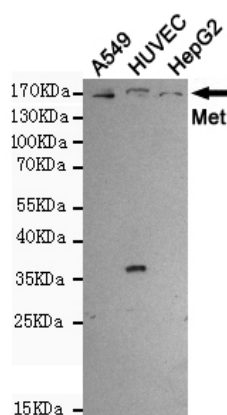
Applications

WB

Dilutions

WB:1/1000

Validations



Western blot analysis of extracts from A549, HUVEC and HepG2 cells using Met (Ab-1234) rabbit pAb (1:1000 diluted). Predicted band size: 156KDa. Observed band size: 156KDa.