

# Anti-Phospho-Hsp27 (Ser78) Rabbit antibody



Catalog Number: 167122

## Product name

Anti-Phospho-Hsp27 (Ser78) Rabbit antibody

## Specificity

Human

## Antibody description

Phospho-Hsp27 (Ser78) Rabbit polyclonal antibody

## Preparation

Antigen: Peptide sequence around phosphorylation site of serine 78 (A-L-S(p)-R-Q) derived from Human HSP27.

## Formulation

Supplied at 1.0mg/mL in phosphate buffered saline (without Mg<sup>2+</sup> and Ca<sup>2+</sup>), pH 7.4, 150mM NaCl, 0.02% sodium azide and 50% glycerol.

## Storage

Store at 4°C short term. Store at -20°C long term. Avoid freeze / thaw cycle.

## Clonality

Polyclonal

## Ig Type

Rabbit IgG

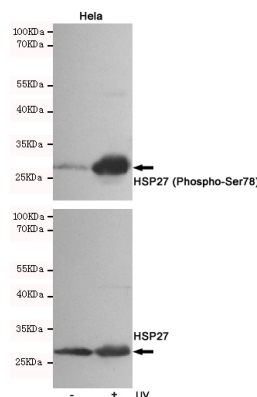
## Applications

WB, IHC-P, ICC/IF

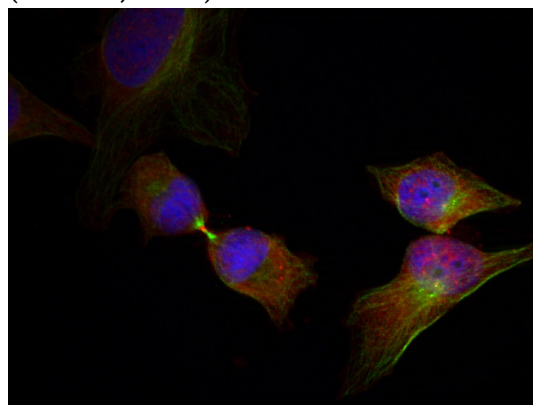
## Dilutions

WB:1/500-1/1000 ICC:1/100-1/200 IHC:1/50-1/100

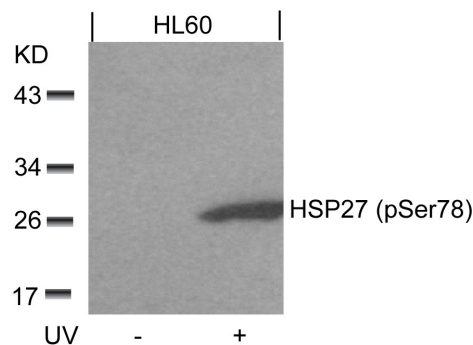
## Validations



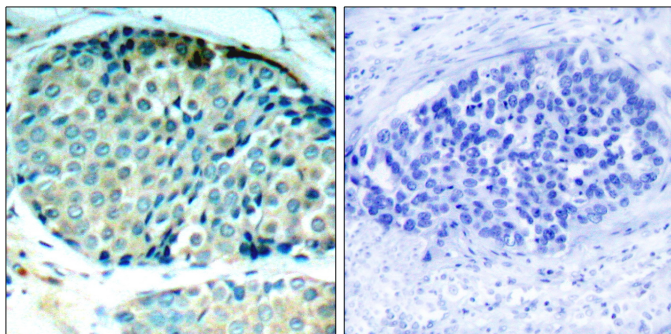
Western blot analysis of extracts from HeLa cells, untreated or treated with UV, using HSP27 (Phospho-Ser78) Rabbit pAb (167122, 1:500 diluted, upper) or Hsp27 Mouse mAb (200778, lower).



Immunofluorescence staining of methanol-fixed HeLa cells showing cytoplasmic, nuclear, centrosomal, midbody staining using HSP27 (Phospho-Ser78) Antibody .



Western blot analysis of extracts from HL60 cells untreated or treated with UV using HSP27 (Phospho-Ser78) Antibody .



Immunohistochemical analysis of paraffin-embedded human breast carcinoma tissue using HSP27 (Phospho-Ser78) Antibody (left) or the same antibody preincubated with blocking peptide (right).