

Anti-CTGF Rabbit antibody



Catalog Number: 167111

General Information

Product name:

Anti-CTGF Rabbit antibody

Immunogen:

Applications:

WB, IP

Specificity:

Human, Mouse

Antibody description:

CTGF Rabbit polyclonal antibody

Properties

Preparation:

Antigen: Recombinant protein of human CTGF

Formulation:

Supplied in 50nM Tris-Glycine(pH 7.4), 0.15M NaCl, 40%Glycerol, 0.01% sodium azide and 0.05% BSA.

Storage:

Store at -20°C. Stable for 12 months from date of receipt.

Clonality:

Polyclonal antibody

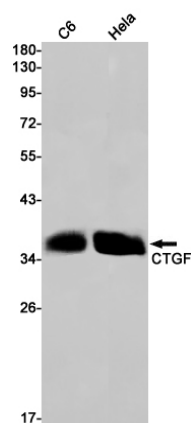
Ig Type:Rabbit IgG

Applications

WB: 1/1000

IP: 1/20

Validations



Western blot detection of CTGF in C6,HeLa cell lysates using CTGF Rabbit pAb(1:1000 diluted).Predicted band size:38kDa.Observed band size:35kDa.