

# Anti-PI 3 Kinase catalytic subunit gamma/PI3K-gamma Rabbit antibody



Catalog Number: 167093

## Product name

Anti-PI 3 Kinase catalytic subunit gamma/PI3K-gamma Rabbit antibody

## Specificity

Human

## Antibody description

PI 3 Kinase catalytic subunit gamma/PI3K-gamma Rabbit polyclonal antibody

## Preparation

Antigen: A synthetic peptide of human PI3K-gamma

## Formulation

Supplied in 50nM Tris-Glycine(pH 7.4), 0.15M NaCl, 40%Glycerol, 0.01% sodium azide and 0.05% BSA.

## Storage

Store at -20°C. Stable for 12 months from date of receipt.

## Clonality

Polyclonal

## Ig Type

Rabbit IgG

## Applications

WB, FC, IP

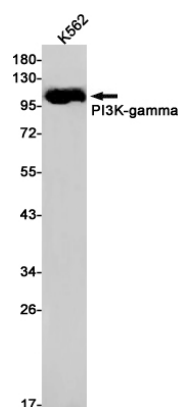
## Dilutions

WB: 1/1000

FC: 1/20

IP: 1/20

## Validations



Western blot detection of PI3K-gamma in K562 cell lysates using PI3K-gamma Rabbit pAb(1:1000 diluted). Predicted band size:127kDa. Observed band size:110kDa.