

Anti-Cyclin D1 Rabbit antibody



Catalog Number: 167037

Product name

Anti-Cyclin D1 Rabbit antibody

ICC/IF: 1/50-1/100

IP: 1/50

Specificity

Human, Mouse, Rat

Validations

Antibody description

Cyclin D1 Rabbit polyclonal antibody

Preparation

Antigen: A synthesized peptide derived from human Cyclin D1

Formulation

Rabbit IgG in phosphate buffered saline , pH 7.4, 150mM NaCl, 0.02% sodium azide and 50% glycerol.

Storage

Store at 4°C short term. Store at -20°C long term. Avoid freeze / thaw cycle.

Clonality

Polyclonal

Ig Type

Rabbit IgG

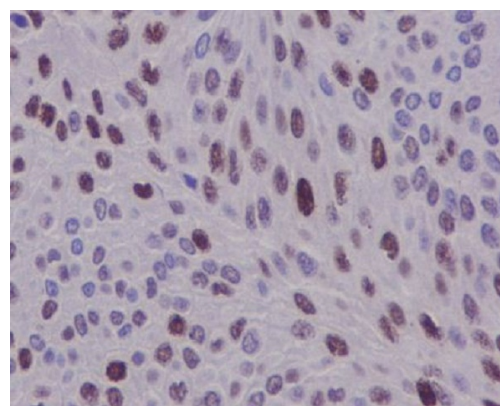
Applications

WB, IHC-P, ICC/IF, IP

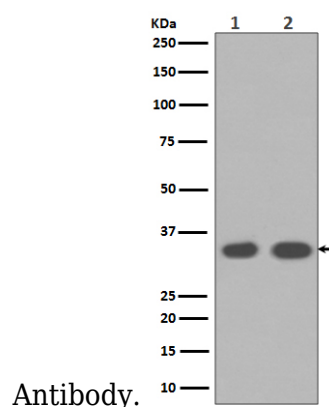
Dilutions

WB: 1/1000-1/5000

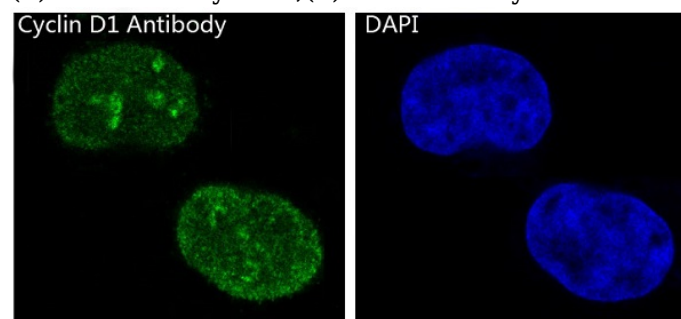
IHC: 1/50-1/200



Immunohistochemical analysis of paraffin-embedded human bladder, using Cyclin D1



Western blot analysis of Cyclin D1 expression in (1)MCF-7 cell lysates;(2) LnCaP cell lysates.



Immunofluorescent analysis of MCF-7 cells, using Cyclin D1 Antibody .