

# Anti-Hsp27 Rabbit antibody



Catalog Number: 167022

## Product name

Anti-Hsp27 Rabbit antibody

IHC: 1/20-1/100

ICC/IF: 1/100

## Specificity

Human, Mouse, Rat

FC: 1/20

IP: 1/20

## Antibody description

Hsp27 Rabbit polyclonal antibody

## Validations

## Preparation

Antigen: A synthetic peptide of human Hsp27

## Formulation

Supplied in 50nM Tris-Glycine(pH 7.4), 0.15M NaCl, 40%Glycerol, 0.01% sodium azide and 0.05% BSA.

## Storage

Store at -20°C. Stable for 12 months from date of receipt.

## Clonality

Polyclonal

## Ig Type

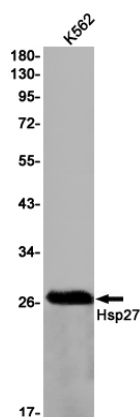
Rabbit IgG

## Applications

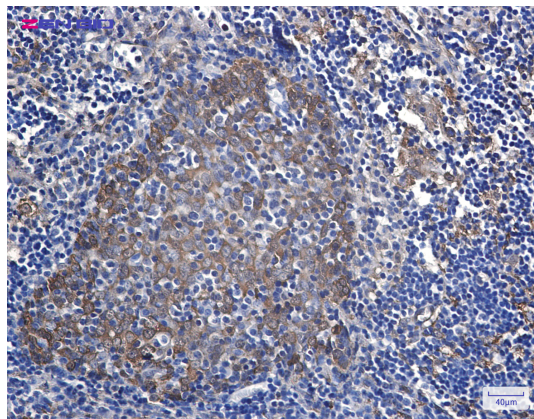
WB, IHC-P, ICC/IF, FC, IP

## Dilutions

WB: 1/1000-1/5000



Western blot detection of Hsp27 in K562 cell lysates using Hsp27 Rabbit pAb(1:1000 diluted). Predicted band size:23kDa. Observed band size:27kDa.



Immunohistochemistry of Hsp27 in paraffin-embedded Human tonsil using Hsp27 Rabbit pAb at dilution 1/20