

Anti-Phospho-Histone H2A.X (Ser139) Rabbit antibody



Catalog Number: 167000

Product name

Anti-Phospho-Histone H2A.X (Ser139) Rabbit antibody

ICC: 1/50-1/200

IP: 1/30

Specificity

Human, Mouse, Rat

Antibody description

Phospho-Histone H2A.X (Ser139) Rabbit polyclonal antibody

Preparation

Antigen: A synthesized peptide derived from human Phospho-Histone H2A.X (S139)

Formulation

Rabbit IgG in phosphate buffered saline , pH 7.4, 150mM NaCl, 0.02% sodium azide and 50% glycerol.

Storage

Store at 4°C short term. Store at -20°C long term. Avoid freeze / thaw cycle.

Clonality

Polyclonal

Ig Type

Rabbit IgG

Applications

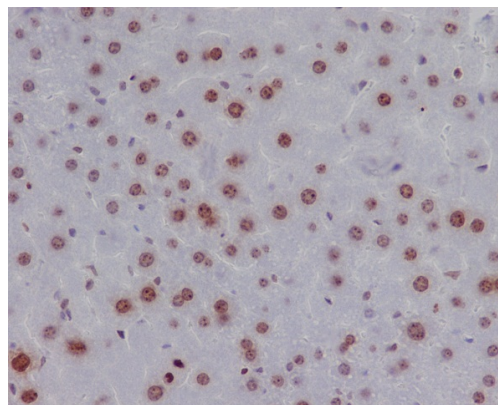
WB, IHC-P, ICC/IF, IP

Dilutions

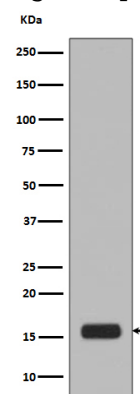
WB: 1/5000-1/10000

IHC: 1/50-1/200

Validations

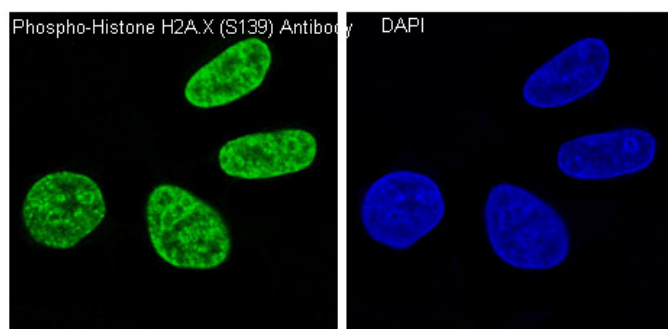


Immunohistochemical analysis of paraffin-embedded mouse liver, using Phospho-Histone



H2A.X (S139) Antibody.

Western blot analysis of Histone H2A.X phosphorylation expression in Jurkat cell lysate treated with etoposide.



Immunofluorescent analysis of HeLa cells treated with H₂O₂, using Phospho-Histone H2A.X (S139) Antibody.