

Anti-Nrf2 Rabbit antibody



Catalog Number: 166988

Product name

Anti-Nrf2 Rabbit antibody

Specificity

Human, Mouse

Antibody description

Nrf2 Rabbit polyclonal antibody

Preparation

Antigen: The antiserum was produced against synthesized peptide derived from human Nrf2. AA range:556-605

Formulation

PBS containing 50% glycerol, 0.5% BSA and 0.02% sodium azide.

Storage

Store at 4°C short term. Store at -20°C long term. Avoid freeze / thaw cycle.

Clonality

Polyclonal

Ig Type

Rabbit IgG

Applications

WB, IHC-P, ICC/IF, ELISA

Dilutions

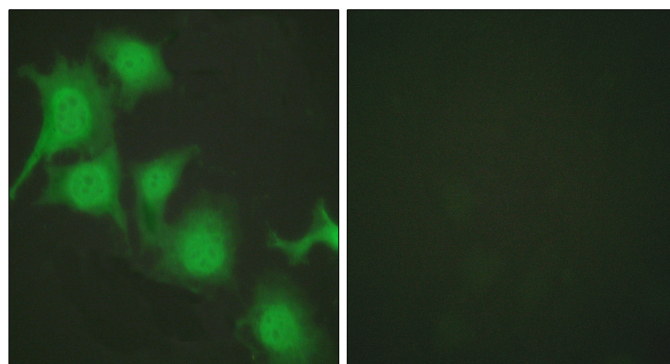
WB: 1/500 - 1/2000

IHC: 1/100 - 1/300

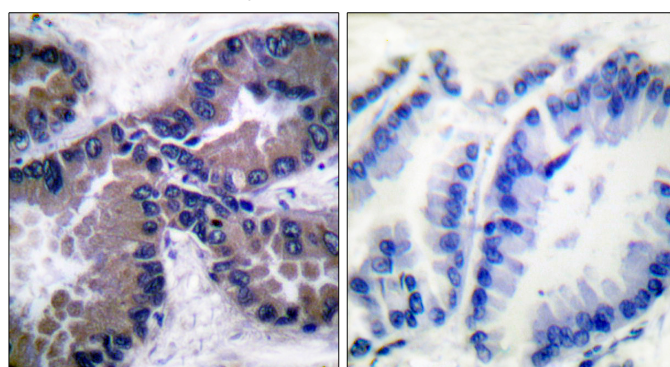
IF: 1/200 - 1/1000

ELISA: 1/40000

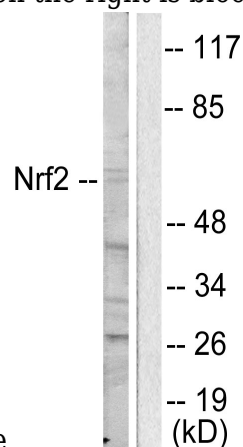
Validations



Immunofluorescence analysis of HUVEC cells, using Nrf2 Antibody. The picture on the right is blocked with the synthesized peptide.



Immunohistochemistry analysis of paraffin-embedded human lung carcinoma tissue, using Nrf2 Antibody. The picture on the right is blocked



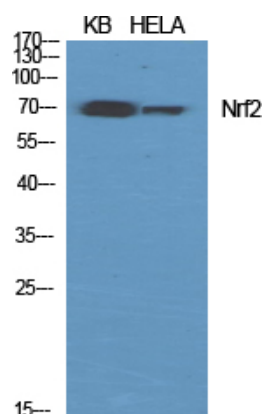
with the synthesized peptide.

Western blot analysis of lysates from HUVEC cells, using Nrf2 Antibody. The lane on the right is blocked with the synthesized peptide.

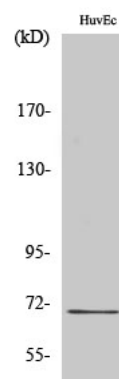
Anti-Nrf2 Rabbit antibody



Catalog Number: 166988



Western Blot analysis of various cells using Nrf2 Polyclonal Antibody diluted at 1:1000



Western Blot analysis of HuvEc cells using Nrf2 Polyclonal Antibody diluted at 1:1000