

# Anti-MMP2 Rabbit antibody



Catalog Number: 166971

## Product name

Anti-MMP2 Rabbit antibody

## Specificity

Human, Mouse, Rat

## Antibody description

MMP2 Rabbit polyclonal antibody

## Preparation

Antigen: A synthesized peptide derived from human MMP2

## Formulation

Rabbit IgG in phosphate buffered saline , pH 7.4, 150mM NaCl, 0.02% sodium azide and 50% glycerol.

## Storage

Store at +4°C short term. Store at -20°C long term. Avoid freeze / thaw cycle.

## Clonality

Polyclonal

## Ig Type

Rabbit IgG

## Applications

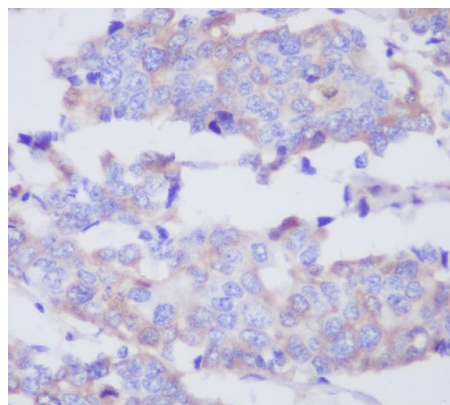
WB, IHC-P

## Dilutions

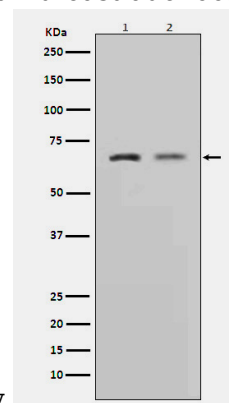
1:500~1:1000

1:50~1:200

## Validations



Immunohistochemical analysis of paraffin-embedded human breast adenocarcinoma, using



MMP2 Antibody.

Western blot analysis of MMP2 expression in (1)L6 cell lysate;(2)HeLa cell lysate.