

Anti-ENO1 Rabbit antibody



Catalog Number: 166952

Product name

Anti-ENO1 Rabbit antibody

Specificity

Human, Mouse, Rat

Antibody description

ENO1 Rabbit polyclonal antibody

Preparation

Antigen: A synthetic peptide of human ENO1

Formulation

Supplied in 50nM Tris-Glycine(pH 7.4), 0.15M NaCl, 40%Glycerol, 0.01% sodium azide and 0.05% BSA.

Storage

Store at -20°C. Stable for 12 months from date of receipt.

Clonality

Polyclonal

Ig Type

Rabbit IgG

Applications

WB, ICC/IF, FC, IP

Dilutions

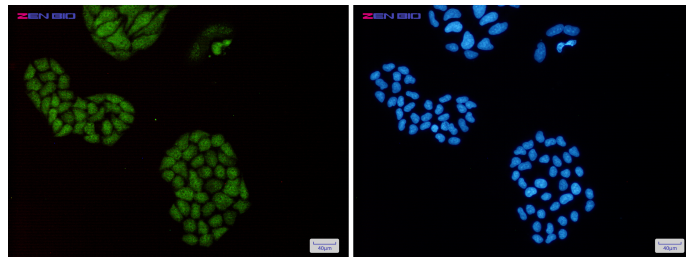
WB: 1/2000

ICC/IF: 1/50

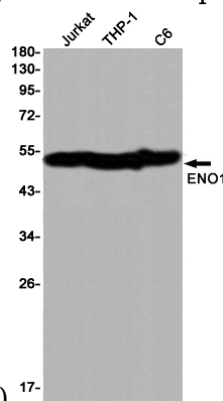
FC: 1/20

IP: 1/20

Validations

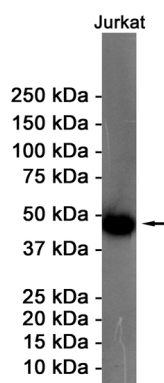


Immunocytochemistry of ENO1(green) in HeLa cells using ENO1 Rabbit pAb at dilution 1/50, and



DAPI(blue)

Western blot detection of ENO1 in Jurkat, THP-1, C6 cell lysates using ENO1 Rabbit pAb(1:1000 diluted). Predicted band size: 47KDa. Observed band size: 47KDa.



Western blot detection of ENO1 in Jurkat cell lysates using ENO1 Rabbit pAb(1:1000 diluted). Predicted band size: 47KDa. Observed band size: 47KDa.