

Anti-Ferritin Heavy Chain Rabbit antibody



Catalog Number: 166949

Product name

Anti-Ferritin Heavy Chain Rabbit antibody

Specificity

Human, Mouse, Rat

Antibody description

Ferritin Heavy Chain Rabbit polyclonal antibody

Preparation

Antigen: A synthesized peptide derived from human Ferritin

Formulation

Rabbit IgG in phosphate buffered saline , pH 7.4, 150mM NaCl, 0.02% sodium azide and 50% glycerol.

Storage

Store at 4°C short term. Store at -20°C long term. Avoid freeze / thaw cycle.

Clonality

Polyclonal

Ig Type

Rabbit IgG

Applications

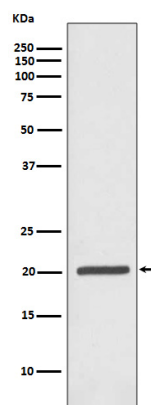
WB, ICC/IF

Dilutions

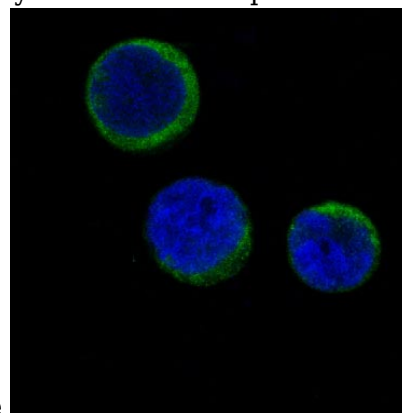
WB: 1/500-1/2000

ICC/IF: 1/50-1/200

Validations



Western blot analysis of Ferritin expression in



Jurkat cell lysate.

Immunofluorescent analysis of Jurkat cells, using Ferritin Antibody.