

Anti-CDC25 Rabbit antibody



Catalog Number: 166914

Product name

Anti-CDC25 Rabbit antibody

Specificity

Human, Rat

Antibody description

CDC25 Rabbit polyclonal antibody

Preparation

Antigen: A synthetic peptide of human CDC25

Formulation

Supplied in 50nM Tris-Glycine(pH 7.4), 0.15M NaCl, 40%Glycerol, 0.01% sodium azide and 0.05% BSA.

Storage

Store at -20°C. Stable for 12 months from date of receipt.

Clonality

Polyclonal

Ig Type

Rabbit IgG

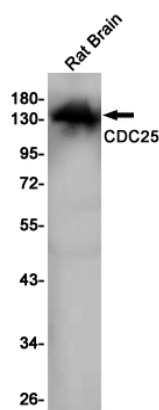
Applications

WB

Dilutions

WB: 1/1000-1/5000

Validations



Western blot detection of CDC25 in Rat Brain lysates using CDC25 Rabbit pAb(1:1000 diluted). Predicted band size:145KDa.Observed band size:145KDa.