

# Anti-Phospho-CREB (Ser133) Rabbit antibody



Catalog Number: 166890

## Product name

Anti-Phospho-CREB (Ser133) Rabbit antibody

## Specificity

Human, Mouse, Rat

## Antibody description

Phospho-CREB (Ser133) Rabbit polyclonal antibody

## Preparation

Antigen: The antiserum was produced against synthesized peptide derived from human CREB around the phosphorylation site of Ser133. AA range:100-149

## Formulation

Liquid in PBS containing 50% glycerol, 0.5% BSA and 0.02% sodium azide.

## Storage

Store at 4°C short term. Store at -20°C long term. Avoid freeze / thaw cycle.

## Clonality

Polyclonal

## Ig Type

IgG

## Applications

ICC/IF, WB, IHC-P, IP, ELISA

## Dilutions

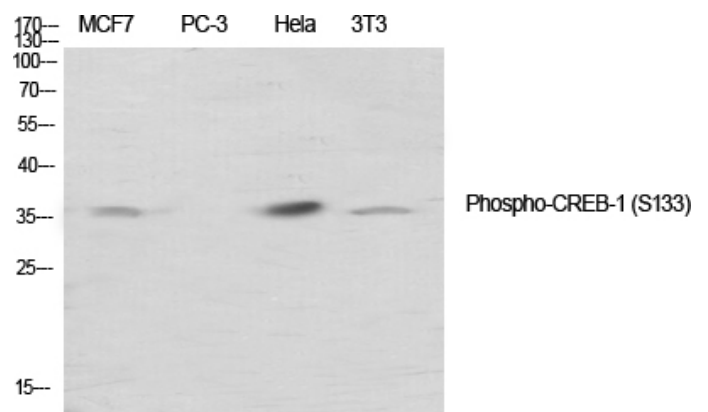
IF: 1/50-200

WB: 1/500 - 1/2000

IHC: 1/100 - 1/300

ELISA: 1/10000

## Validations



Western Blot analysis of various cells using Phospho-CREB-1 (S133) Polyclonal Antibody