

Anti-Chk1 Rabbit antibody



Catalog Number: 166875

Product name

Anti-Chk1 Rabbit antibody

Specificity

Human, Mouse, Rat

Antibody description

Chk1 Rabbit polyclonal antibody

Preparation

Antigen: A synthetic peptide of human Chk1

Formulation

Supplied in 50nM Tris-Glycine(pH 7.4), 0.15M NaCl, 40%Glycerol, 0.01% sodium azide and 0.05% BSA.

Storage

Store at -20°C. Stable for 12 months from date of receipt.

Clonality

Polyclonal

Ig Type

Rabbit IgG

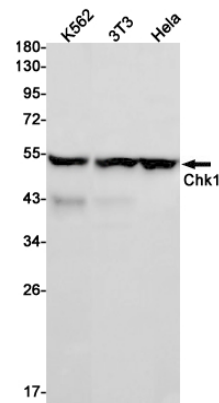
Applications

WB

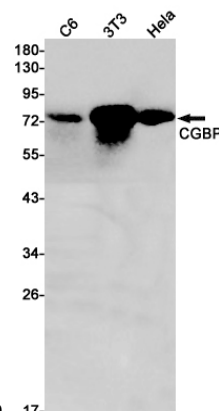
Dilutions

WB: 1/1000

Validations



Western blot detection of Chk1 in K562 cell lysates using Chk1 Rabbit pAb(1:1000 diluted). Predicted band size: 54 kDa. Observed



band size: 54 kDa.

Western blot detection of Chk1 in K562, 3T3, HeLa cell lysates using Chk1 Rabbit pAb(1:1000 diluted). Predicted band size: 54 kDa. Observed band size: 54 kDa.