

Anti-Phospho-GSK3 (alpha + beta)(Tyr216/Tyr279) Rabbit antibody



Catalog Number: 166866

Product name

Anti-Phospho-GSK3 (alpha + beta)(Tyr216/Tyr279)
Rabbit antibody

Specificity

Human, Mouse, Rat

Antibody description

Phospho-GSK3 (alpha + beta)(Tyr216/Tyr279)
Rabbit polyclonal antibody

Preparation

Antigen: A synthetic phosphopeptide corresponding to residues surrounding Tyr216 of human GSK3 alpha

Formulation

Supplied in 50nM Tris-Glycine(pH 7.4), 0.15M NaCl, 40%Glycerol, 0.01% sodium azide and 0.05% BSA.

Storage

Store at -20°C. Stable for 12 months from date of receipt.

Clonality

Polyclonal

Ig Type

Rabbit IgG

Applications

WB, ICC/IF, IP

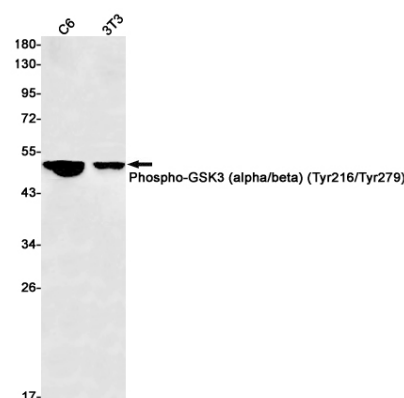
Dilutions

WB: 1/1000

ICC/IF: 1/50

IP: 1/20

Validations



Western blot detection of Phospho-GSK3 (alpha/beta) (Tyr216/Tyr279) in C6,3T3 cell lysates using Phospho-GSK3 (alpha/beta) (Tyr216/Tyr279) Rabbit pAb(1:1000 diluted).Predicted band size:51,47kDa.Observed band size:47-51kDa.