

Anti-p27 KIP 1 Rabbit antibody

Catalog Number: 166853

Product name

Anti-p27 KIP 1 Rabbit antibody

IHC: 1/20

ICC/IF: 1/50

Specificity

Human, Rat

FC: 1/20

IP: 1/20

Antibody description

p27 KIP 1 Rabbit polyclonal antibody

Preparation

Antigen: A synthetic peptide of human p27 KIP 1

Formulation

Supplied in 50nM Tris-Glycine(pH 7.4), 0.15M NaCl, 40%Glycerol, 0.01% sodium azide and 0.05% BSA.

Storage

Store at -20°C. Stable for 12 months from date of receipt.

Clonality

Polyclonal

Ig Type

Rabbit IgG

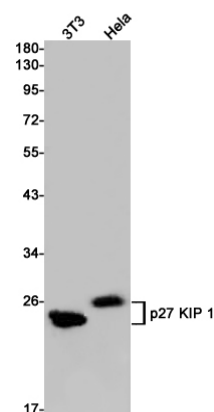
Applications

WB, IHC-P, ICC/IF, FC, IP

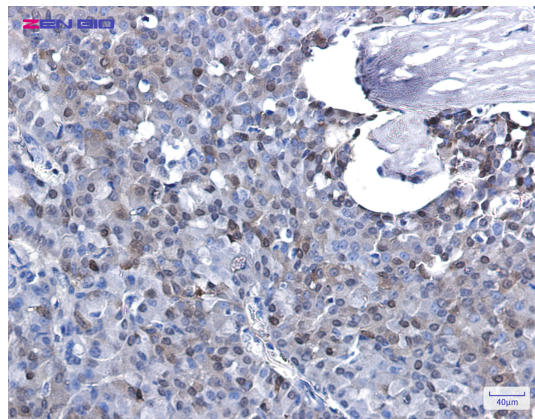
Dilutions

WB: 1/1000

Validations



Western blot detection of p27 KIP 1 in 3T3, HeLa cell lysates using p27 KIP 1 Rabbit pAb(1:1000 diluted). Predicted band size: 22kDa. Observed band size: 27kDa.



Immunohistochemistry of p27 KIP 1 in paraffin-embedded Human breast cancer tissue using p27 KIP 1 Rabbit pAb at dilution 1/20