

Anti-CERS5 Rabbit antibody



Catalog Number: 166813

Product name

Anti-CERS5 Rabbit antibody

Specificity

Human

Antibody description

CERS5 Rabbit polyclonal antibody

Preparation

Antigen: Synthetic peptide of human CERS5

Formulation

-20°C, pH7.4 PBS, 0.05% NaN₃, 40% Glycerol

Storage

Store at 4°C short term. Store at -20°C long term.
Avoid freeze / thaw cycle.

Clonality

Polyclonal

Ig Type

Rabbit IgG

Applications

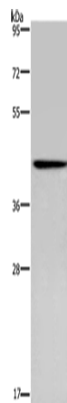
ELISA, WB, IHC-P

Dilutions

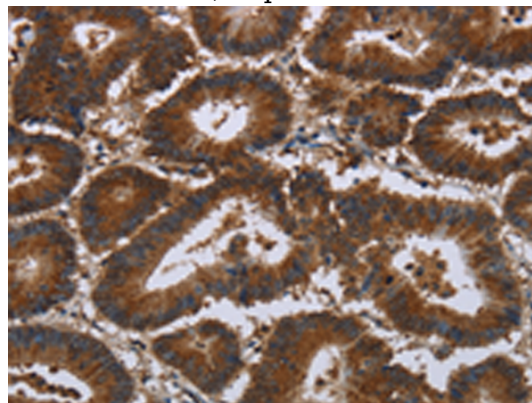
WB: 1/200-1/1000

IHC: 1/50-1/200

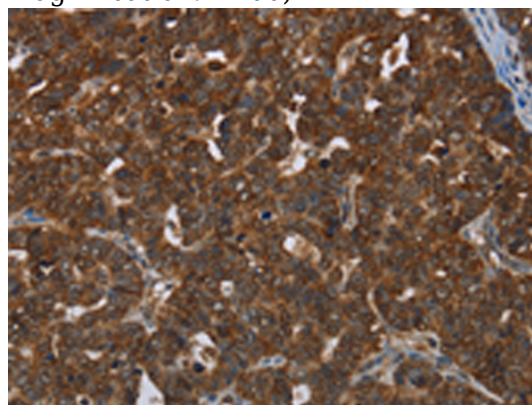
Validations



Gel: 8%SDS-PAGE, Lysate: 40 µg, Lane: Human fetal brain tissue, Primary antibody: 166813(CERS5 Antibody) at dilution 1/350, Secondary antibody: Goat anti rabbit IgG at 1/8000 dilution, Exposure time: 5 minutes



The image is immunohistochemistry of paraffin-embedded Human colon cancer tissue using 166813(CERS5 Antibody) at dilution 1/35, on the right is treated with synthetic peptide. (Original magnification: ×200)



The image is immunohistochemistry of paraffin-embedded Human cervical cancer tissue using 166813(CERS5 Antibody) at dilution 1/35, on the

Anti-CERS5 Rabbit antibody



Catalog Number: 166813

right is treated with synthetic peptide. (Original magnification: ×200)