

# Anti-Alpha Skeletal Muscle Actin Rabbit antibody



Catalog Number: 166784

## Product name

Anti-Alpha Skeletal Muscle Actin Rabbit antibody

## Specificity

Human, Mouse, Rat

## Antibody description

Alpha Skeletal Muscle Actin Rabbit polyclonal antibody

## Preparation

Antigen: A synthetic peptide of human Actin

## Formulation

Supplied in 50nM Tris-Glycine(pH 7.4), 0.15M NaCl, 40%Glycerol, 0.01% sodium azide and 0.05% BSA.

## Storage

Store at -20°C. Stable for 12 months from date of receipt.

## Clonality

Polyclonal

## Ig Type

Rabbit IgG

## Applications

WB, IHC-P, ICC/IF, FC, IP

## Dilutions

WB: 1/1000

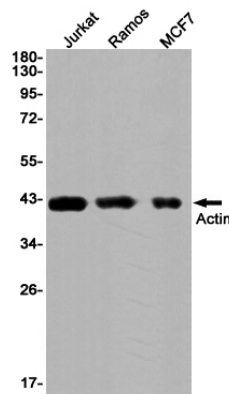
IHC: 1/50

ICC/IF: 1/20

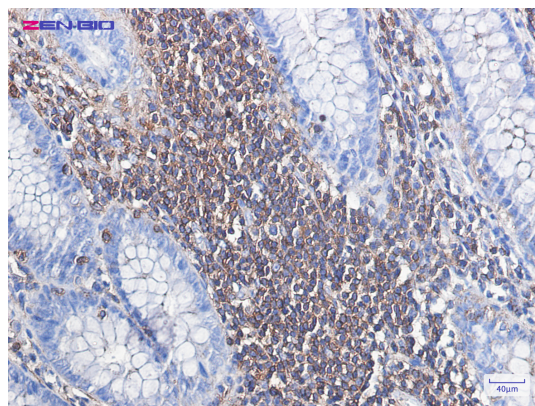
FC: 1/20

IP: 1/20

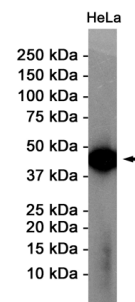
## Validations



Western blot detection of Actin in Jurkat,Ramos,MCF7 cell lysates using Actin Rabbit pAb(1:1000 diluted).Predicted band size:42KDa.Observed band size:42KDa.



Immunohistochemistry of Actin in paraffin-embedded Human colon cancer tissue using Actin



Rabbit pAb at dilution 1/100

Western blot detection of Actin in HeLa cell lysates using Actin Rabbit pAb(1:1000 diluted).Predicted band size:42KDa.Observed

# Anti-Alpha Skeletal Muscle Actin Rabbit antibody



Catalog Number: 166784

---

band size:42KDa.