

# Anti-GSK3 alpha Rabbit antibody



Catalog Number: 166777

## Product name

Anti-GSK3 alpha Rabbit antibody

## Specificity

Human, Mouse, Rat

## Antibody description

GSK3 alpha Rabbit polyclonal antibody

## Preparation

Antigen: Peptide sequence around aa.19~23 (T-S-S-F-A) derived from Human GSK3 $\alpha$ .

## Formulation

Supplied at 1.0mg/mL in phosphate buffered saline (without Mg<sup>2+</sup> and Ca<sup>2+</sup>), pH 7.4, 150mM NaCl, 0.02% sodium azide and 50% glycerol.

## Storage

Store at 4°C short term. Store at -20°C long term. Avoid freeze / thaw cycle.

## Clonality

Polyclonal

## Ig Type

IgG

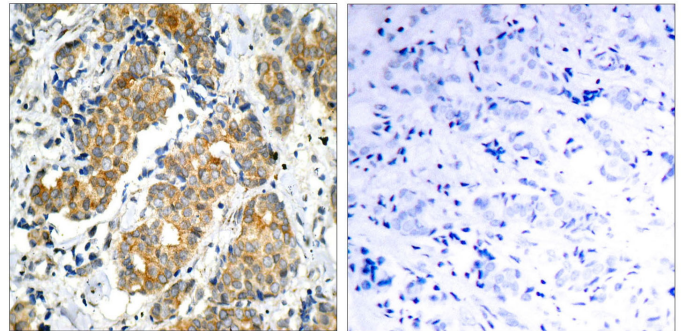
## Applications

WB, IHC-P, ICC/IF

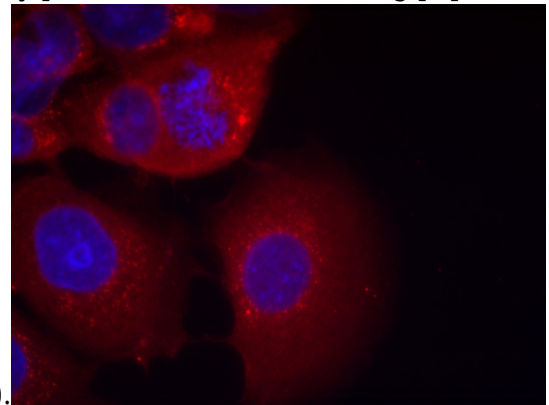
## Dilutions

WB:1/500-1/1000 ICC:1/100-1/200 IHC:1/50-1/100

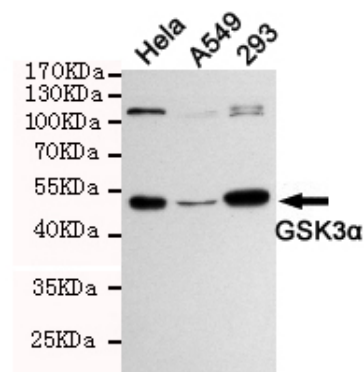
## Validations



Immunohistochemical analysis of paraffin-embedded human breast carcinoma tissue using GSK3u03b1 (Ab-21) Antibody (left) or the same antibody preincubated with blocking peptide



Immunofluorescence staining of methanol-fixed MCF7 cells using GSK3u03b1 (Ab-21) Antibody .



Western blot analysis of extracts from 293, HeLa and A549 cells using GSK3u03b1 (Ab-21) rabbit pAb (1:1000 diluted). Predicted band size: 51kDa. Observed band size: 51kDa.