

# Anti-RUNX1/2/3 Rabbit antibody



Catalog Number: 166761

## Product name

Anti-RUNX1/2/3 Rabbit antibody

## Specificity

Human, Mouse, Rat

## Antibody description

RUNX1/2/3 Rabbit polyclonal antibody

## Preparation

Antigen: A synthetic peptide of human RUNX1/2/3

## Formulation

Supplied in 50nM Tris-Glycine(pH 7.4), 0.15M NaCl, 40%Glycerol, 0.01% sodium azide and 0.05% BSA.

## Storage

Store at -20°C. Stable for 12 months from date of receipt.

## Clonality

Polyclonal

## Ig Type

Rabbit IgG

## Applications

WB, IHC-P, ICC/IF, FC, IP

## Dilutions

WB: 1/2000

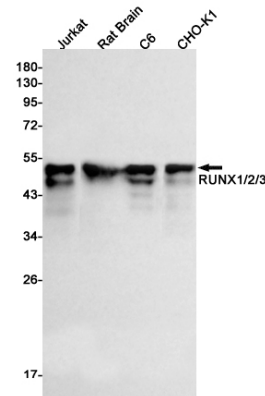
IHC: 1/50

ICC/IF: 1/50

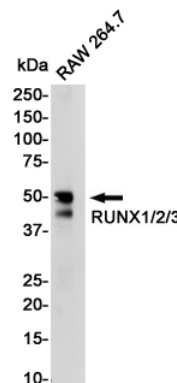
FC: 1/20

IP: 1/20

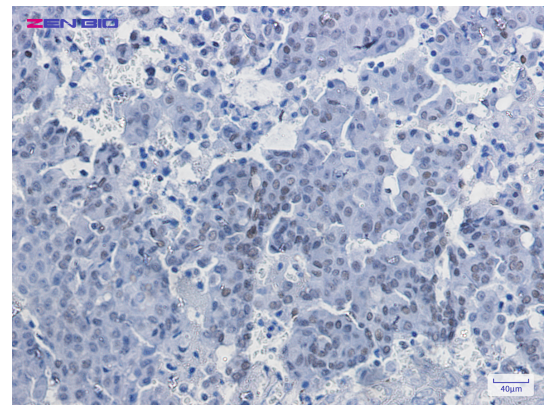
## Validations



Western blot detection of RUNX1/2/3 in Jurkat, Rat Brain, C6, CHO-K1 cell lysates using RUNX1/2/3 Rabbit pAb(1:1000 diluted). Predicted band size:49kDa. Observed band size:49kDa.



Western blot detection of RUNX1/2/3 in RAW264.7 cell lysates using RUNX1/2/3 Rabbit pAb(1:1000 diluted). Predicted band size:49KDa. Observed band size:49KDa.



Immunohistochemistry of RUNX1/2/3 in paraffin-embedded Human breast cancer tissue using RUNX1/2/3 Rabbit pAb at dilution 1/50