

# Anti-Alkaline Phosphatase Rabbit antibody



Catalog Number: 166748

## Product name

Anti-Alkaline Phosphatase Rabbit antibody

## Specificity

Human, Mouse, Rat

## Antibody description

Alkaline Phosphatase Rabbit polyclonal antibody

## Preparation

Antigen: A synthesized peptide derived from human Alkaline Phosphatase

## Formulation

Rabbit IgG in phosphate buffered saline , pH 7.4, 150mM NaCl, 0.02% sodium azide and 50% glycerol.

## Storage

Store at 4°C short term. Store at -20°C long term. Avoid freeze / thaw cycle.

## Clonality

Polyclonal

## Ig Type

Rabbit IgG

## Applications

WB, IHC-P, ICC/IF, IP, FC

## Dilutions

WB: 1/5000-1/10000

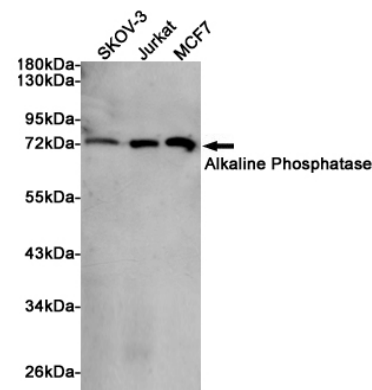
IHC: 1/50-1/200

ICC/IF: 1/50-1/100

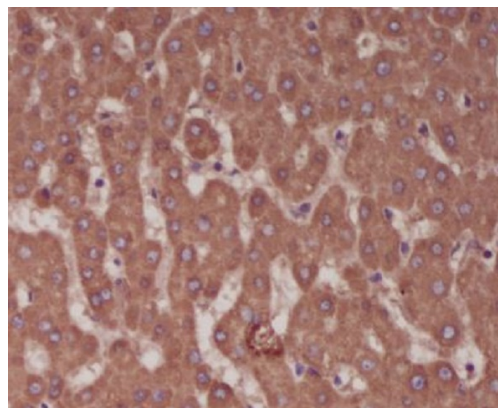
IP: 1/50

FC: 1/50

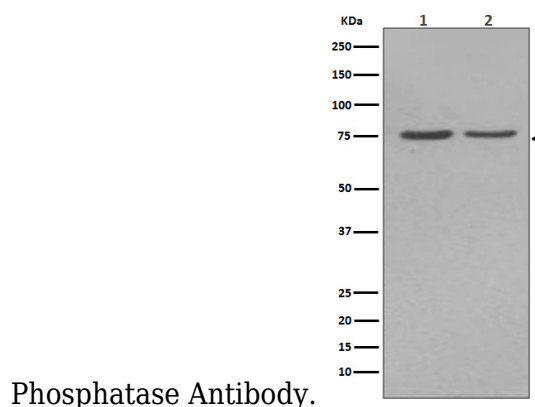
## Validations

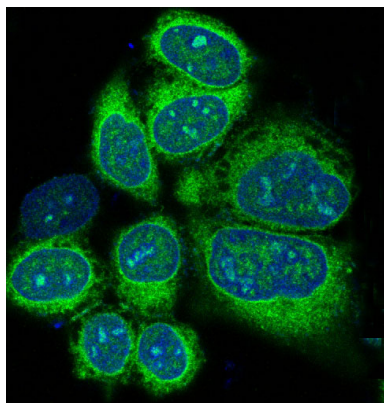


Western blot analysis of extracts from SKOV-3, Jurkat and MCF7 cells using Alkaline Phosphatase Rabbit pAb at 1:1000 dilution. Predicted band size: 57kDa. Observed band size: 70kDa.



Immunohistochemical analysis of paraffin-embedded human liver, using Alkaline





Immunofluorescent analysis of HeLa cells, using Alkaline Phosphatase Antibody .

lysate.